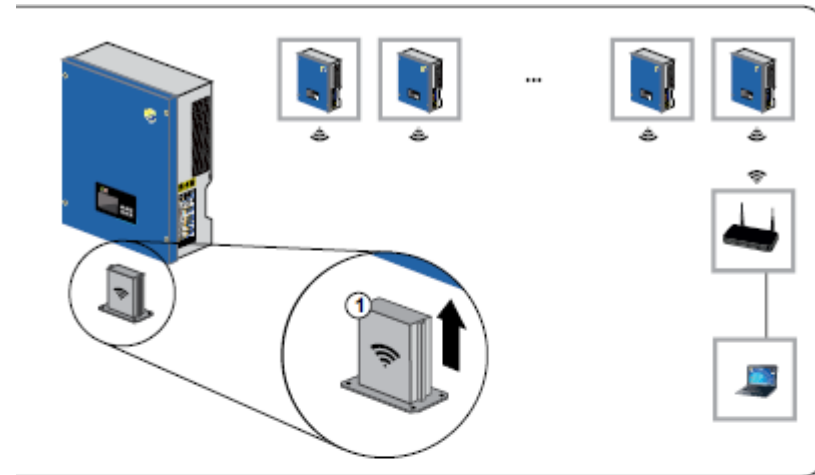


WiFi & RS485 module

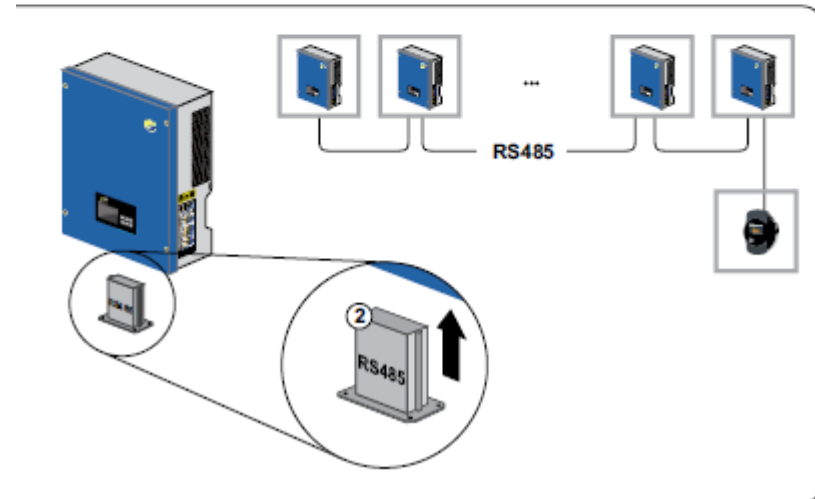


The inverter can be equipped with
Additional communication interfaces

1. WiFi
2. RS485



The inverter can only be equipped with
One type of communication interface

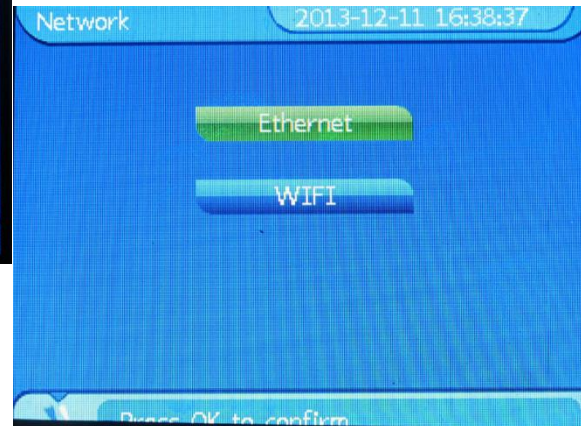


How to use WiFi module?



Step1: Note down the inverter WiFi SSID from
Main Menu->Settings->Network->WiFi (Default customer password is 111111)

into this example the inverter WiFi SSID is SAMILPOWER_10829A

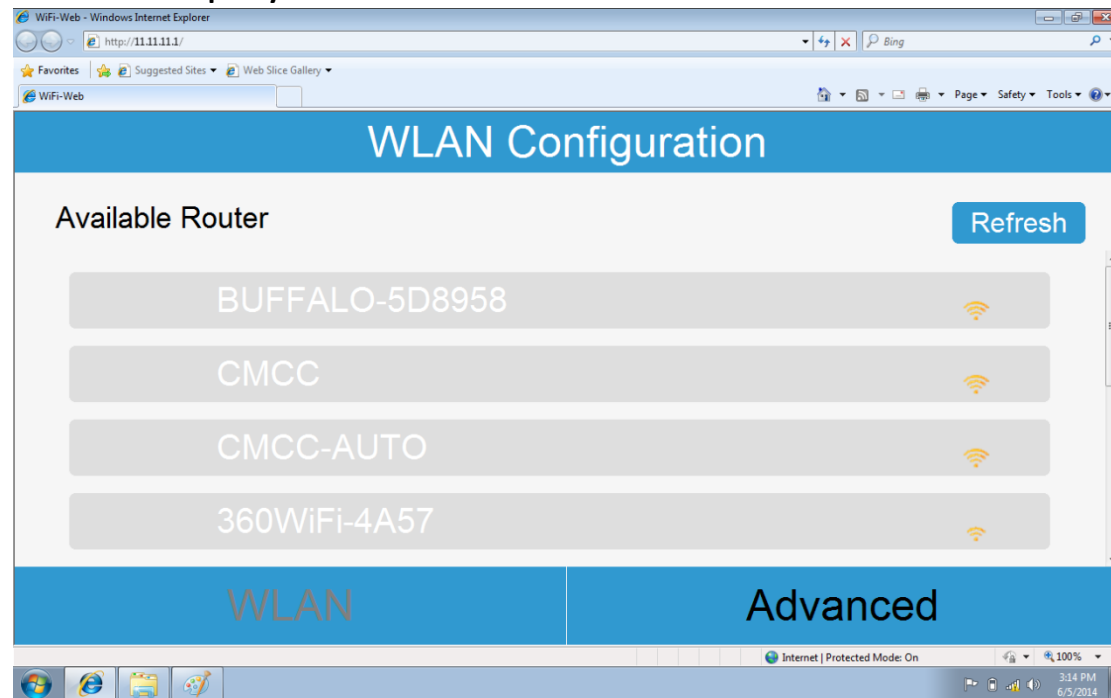


How to use WiFi module?

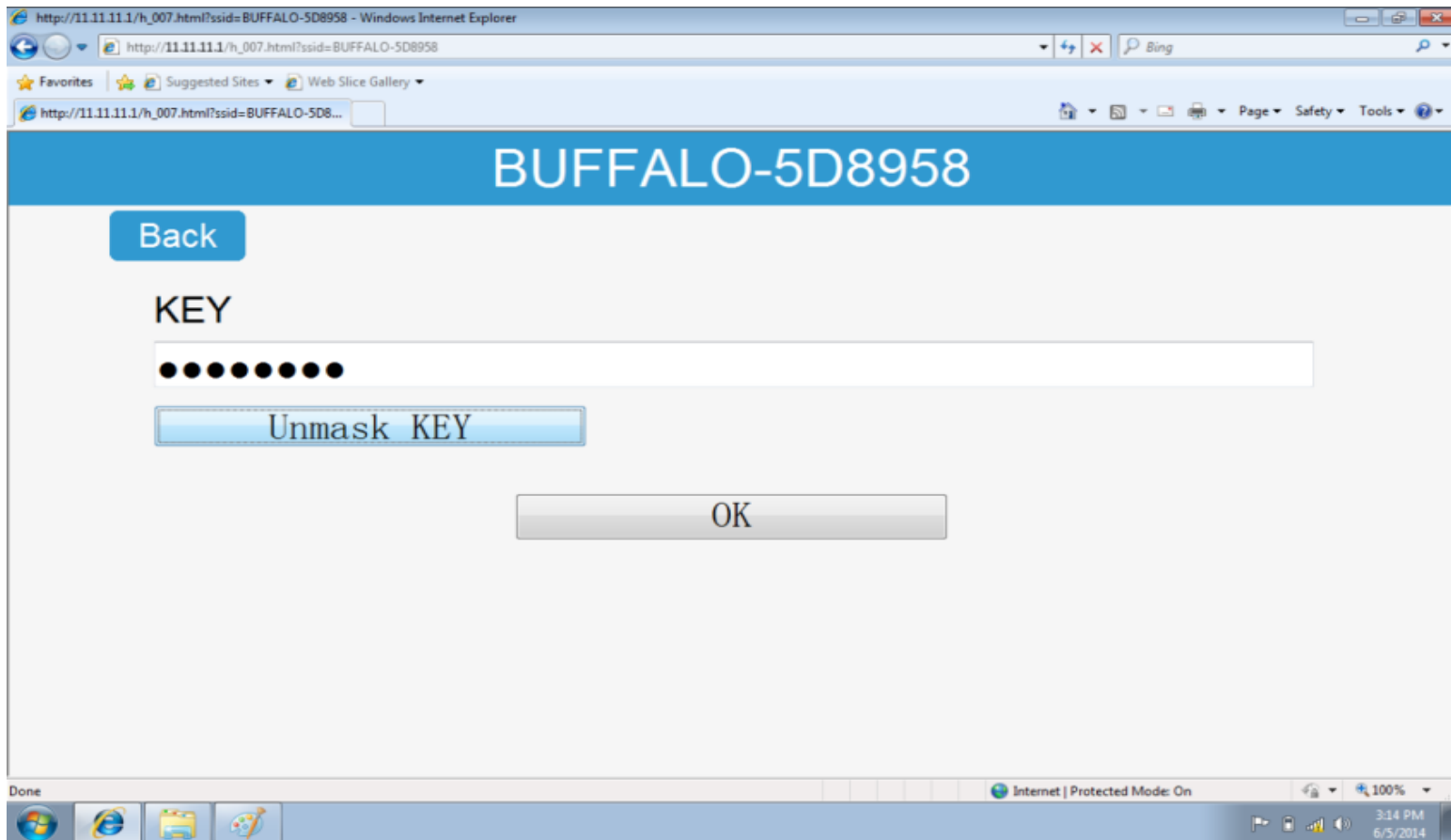


Step2: Configure and set parameter of WiFi module.

- Prepare a laptop with WiFi. Open the wireless network connection.
- Choose the WiFi SSID (*SAMILPOWER_10829A*)
- Input the default password “*samil123*”
- Open the web browser on the website: <http://11.11.11.1>
- Select your router from the displayed list



How to use WiFi module?



Input Password and click ok