

SR-S Quick Instruction of WiFi Connection

SAMIL POWER CO., LTD.

Add: No.6, Xuefengshan Road, Suqian High-tech Industrial Development Zone,
Jiangsu Province, P.R.China. 223800

Tel : +86 (0) 527 88754666

Fax: +86 (0) 527 84453877

E-mail: service@samilpower.com

The Procedure of WiFi Setting

Step 1: Write down the WiFi SSID of inverter.

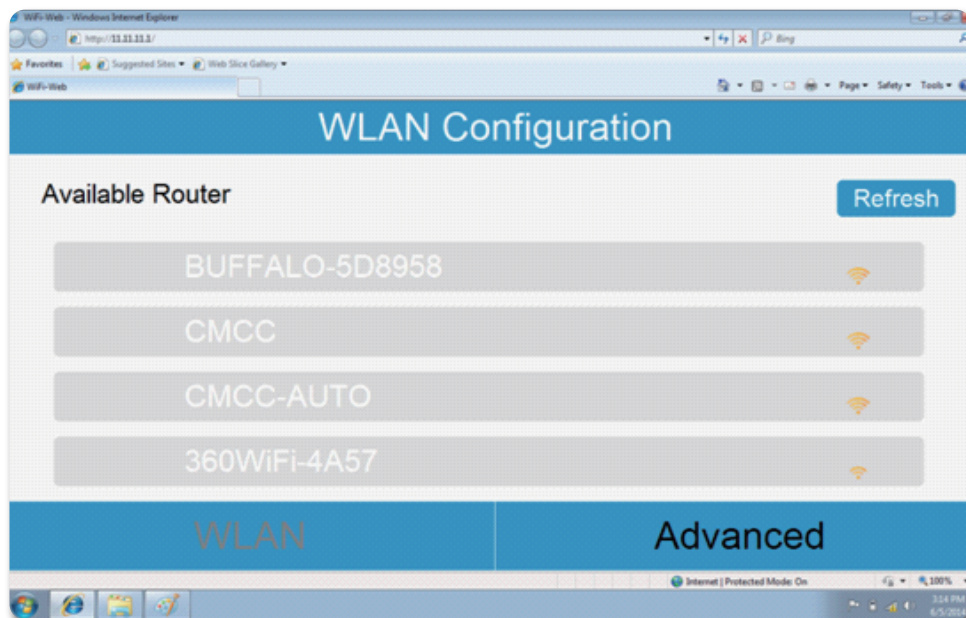
When the inverter is running, press the function button until the WiFi SN is displaying on the screen.



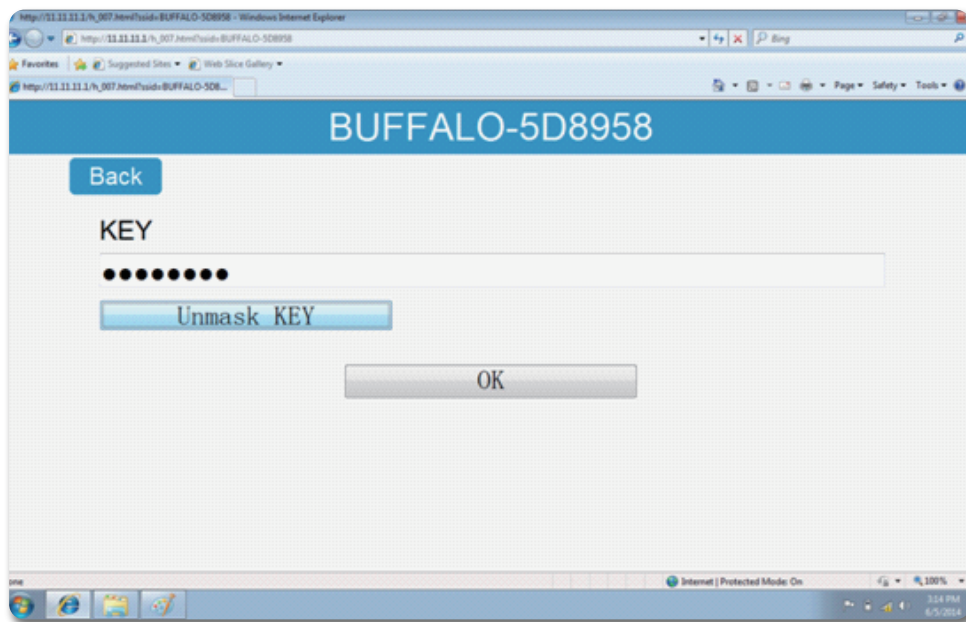
Step 2: Configure and set parameter of WiFi module.

Prepare a laptop with WiFi. Open the wireless network connection.

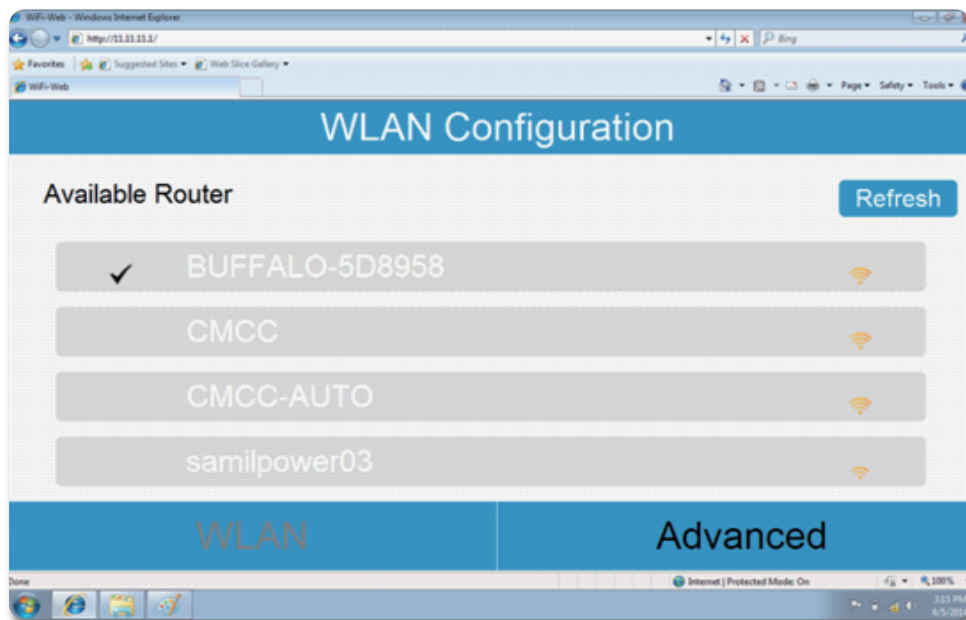
1. Choose the WiFi SSID: samilpower_10829A
2. Input the default password "samil123"
3. Input the website: http://11.11.11.1
4. Choose router



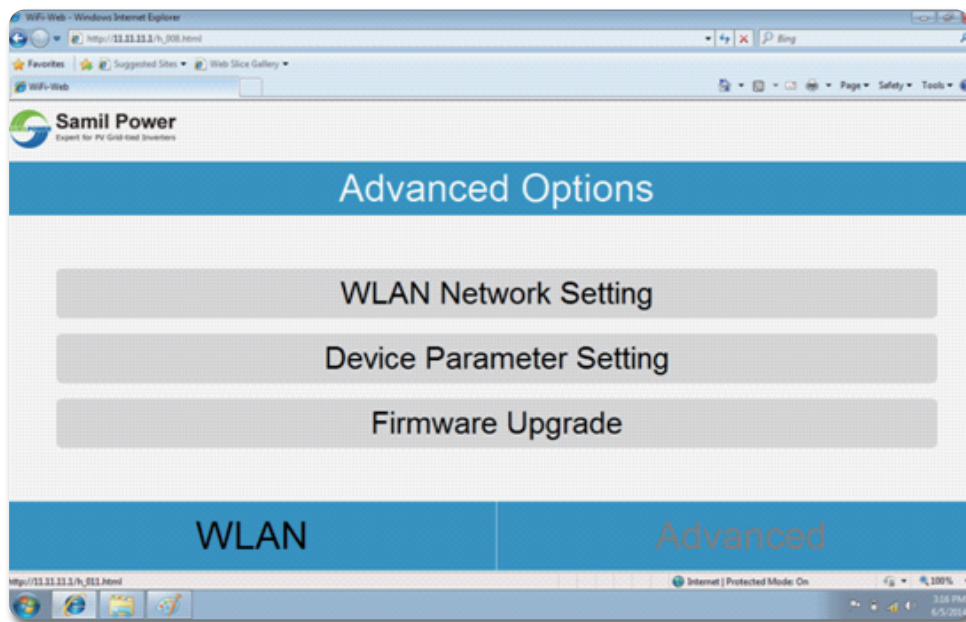
Input password and click OK.



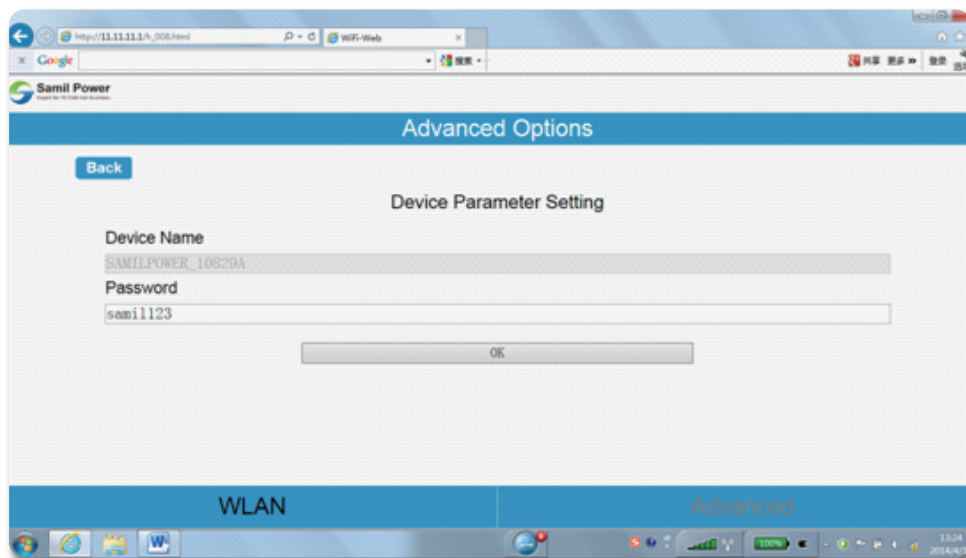
Wait 15 seconds and then repeat 1 to 3. if connection is established, you can see a tick on the right router.



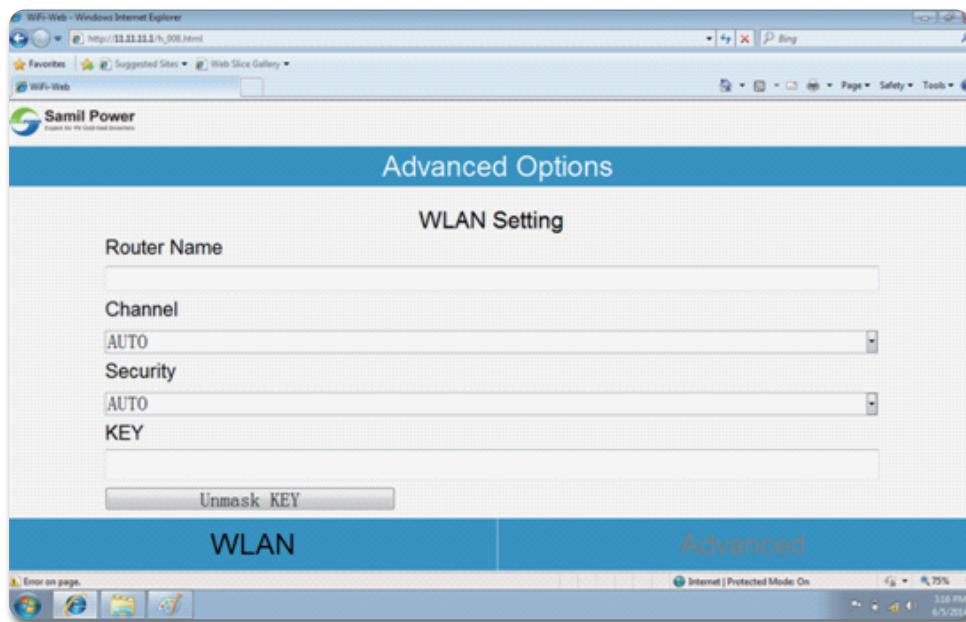
You can also change the module password. Choose 'Advanced' you can see the following screen.



Choose Device Parameter Setting and change your password:



In WLAN Network Setting, you can connect to router manually.



Reset and factory setting:
Hold pressing the function key at this screen for 15 seconds

Wifi SN
SAMIL_10829A

When you see the following screen, the WiFi setting will be reset to factory setting.

Success!
SAMIL_10829A